



Statistics Korea

Press Release



광복 80
빛나는 발걸음, 새로운 길

Embargo 12:00P.M., Aug. 12, 2025 Release Date 8:30A.M., Aug. 12, 2025

Regional Economic Trends in the Second Quarter of 2025

Contact Division	Income Statistics Division, Economic Statistics Bureau	Contact Person	Jeong, Seon-kyung (042-481-2206)
------------------	---	----------------	----------------------------------

Regional Economic Trends in the Second Quarter of 2025

- In the second quarter of 2025, the Mining and Manufacturing Production Index marked a year-on-year increase in 6 regions including Chungbuk (14.1%) and Gyeonggi (12.3%). Whereas, the Mining and Manufacturing Production Index marked a year-on-year decrease in 11 regions including Seoul (-10.1%) and Chungnam (-6.4%). [The nation: 2.1%]
- The Index of Services marked a year-on-year increase in 8 regions including Gyeonggi (5.4%) and Incheon (3.5%). In the meantime, the Index of Services marked a year-on-year decrease in 8 regions including Jeju (-9.2%) and Gyeongnam (-2.8%). [The nation: 1.4%]
- The Retail Sales Index showed a year-on-year increase in 11 regions including Ulsan (5.4%) and Incheon (4.9%). Whereas, the Retail Sales Index showed a year-on-year decrease in 6 regions including Jeju (-2.3%) and Gyeongbuk (-1.8%). [The nation: -0.2%]
- Exports (based on customs clearance) showed a year-on-year increase in 10 regions including Jeju (37.8%) and Chungbuk (34.9%). On the other hand, exports showed a year-on-year decrease in 7 regions including Sejong (-37.2%) and Jeonnam (-13.7%). [The nation: 2.1%]
- The employment-population ratio marked a year-on-year increase in 11 regions including Daejeon (1.2%p) and Busan (1.0%p). Whereas, the employment-population ratio marked a year-on-year decrease in 4 regions including Jeonbuk (-1.0%p) and Gwangju (-0.4%p). [The nation: 0.2%p]
- The Consumer Price Index marked a year-on-year increase in all 17 regions including Busan (2.2%) and Gyeonggi (2.1%). [The nation: 2.1%]

< Major Economic Indicators in the Second Quarter of 2025 >

(Year-on-year, %, %p)

	Mining and Manufacturing Production Index	Index of Services	Retail Sales Index	Exports	Employment- population ratio	Consumer Price Index
Seoul	-10.1	2.3	-1.8	1.6	-0.2	2.0
Busan	-4.0	2.1	1.0	-6.0	1.0	2.2
Daegu	-2.2	-1.2	-1.4	4.7	0.0	2.1
Incheon	-3.7	3.5	4.9	6.2	0.4	2.0
Gwangju	11.3	0.2	2.1	10.4	-0.4	1.7
Daejeon	-0.6	0.3	1.2	4.8	1.2	1.9
Ulsan	2.5	-0.5	5.4	-3.1	0.2	1.9
Sejong	-3.4	3.3	3.5	-37.2	0.0	2.1
Gyeonggi	12.3	5.4	0.3	3.4	0.1	2.1
Gangwon	0.3	-1.6	-0.9	3.9	1.0	2.1
Chungbuk	14.1	0.9	1.4	34.9	0.8	2.0
Chungnam	-6.4	0.0	-0.5	-1.0	0.7	2.1
Jeonbuk	-1.3	-1.2	0.1	-0.4	-1.0	2.1
Jeonnam	-1.7	-0.6	0.4	-13.7	-0.2	2.1
Gyeongbuk	4.1	-1.3	-1.8	-3.7	0.5	1.9
Gyeongnam	-1.1	-2.8	1.4	12.9	0.3	2.1
Jeju	-2.2	-9.2	-2.3	37.8	0.5	1.5
The nation	2.1	1.4	-0.2	2.1	0.2	2.1

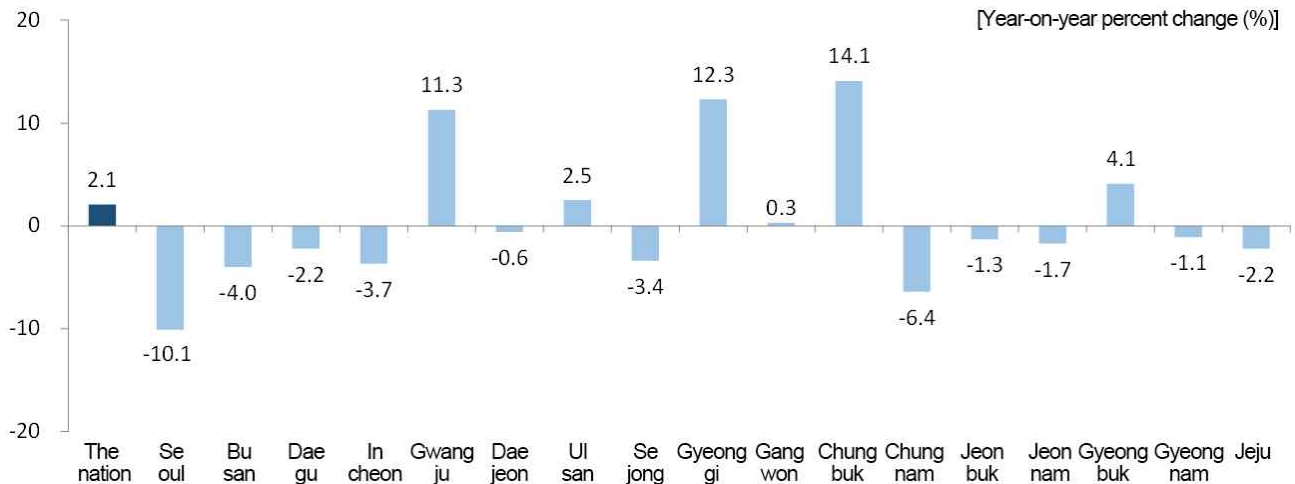
Production

□ (Mining and Manufacturing Production Index)

In the second quarter of 2025, the Mining and Manufacturing Production Index of the nation went up by 2.1% year-on-year due to the increase in 'Semiconductors & electronic components' and 'Other transport equipment'.

- Seoul (-10.1%), Chungnam (-6.4%) and Busan (-4.0%) recorded a year-on-year decrease in the Mining and Manufacturing Production Index due to a drop in 'Medical, precision and optical instruments, watches and clocks', 'Semiconductors & electronic components' and 'Metal ores'. In the meantime, Chungbuk (14.1%), Gyeonggi (12.3%) and Gwangju (11.3%) recorded a year-on-year increase in the Mining and Manufacturing Production Index due to a rise in 'Semiconductors & electronic components' and 'Electrical equipment'.

< Mining and Manufacturing Production Index in the second quarter of 2025 >

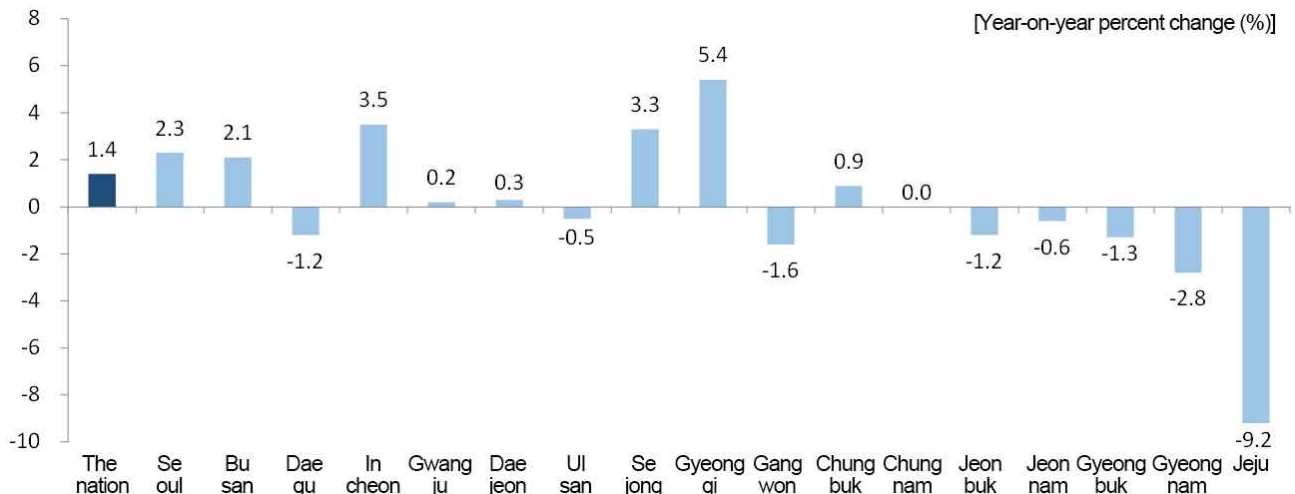


□ (Index of Services)

In the second quarter of 2025, the Index of Services for the nation went up by 1.4% year-on-year due to the increase in 'Human Health and Social Work Activities' and 'Financial and Insurance Activities'.

- Jeju (-9.2%), Gyeongnam (-2.8%) and Gangwon (-1.6%) recorded a year-on-year decrease owing to the drop in 'Information and Communication', 'Real Estate Activities' and 'Arts, Sports and Recreation-related Services'. In the meantime, Gyeonggi (5.4%), Incheon (3.5%) and Sejong (3.3%) recorded a year-on-year increase owing to the rise in 'Arts, Sports and Recreation-related Services' and 'Professional, Scientific and Technical Activities'.

< Index of Services in the second quarter of 2025 >



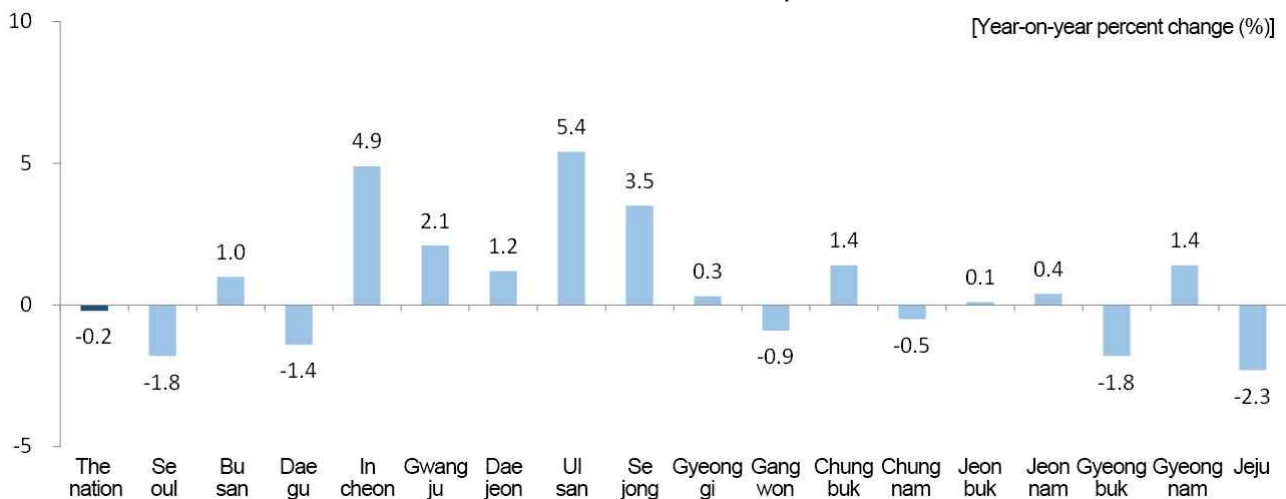
Consumption and Construction

□ (Retail Sales Index)

In the second quarter of 2025, the Retail Sales Index of the nation fell by 0.2% year-on-year owing to a drop in 'Supermarkets, convenient stores and other retail sale in non-specialized stores' and 'Duty-free shops'.

- Ulsan (5.4%), Incheon (4.9%) and Sejong (3.5%) marked a year-on-year increase in the Retail Sales Index owing to a rise in 'Passenger cars and fuel stores'. On the other hand, Jeju (-2.3%), Gyeongbuk (-1.8%) and Seoul (-1.8%) marked a year-on-year decrease in the Retail Sales Index due to a drop in 'Duty-free shops' and 'Specialized stores'.

< Retail Sales Index in the second quarter of 2025 >



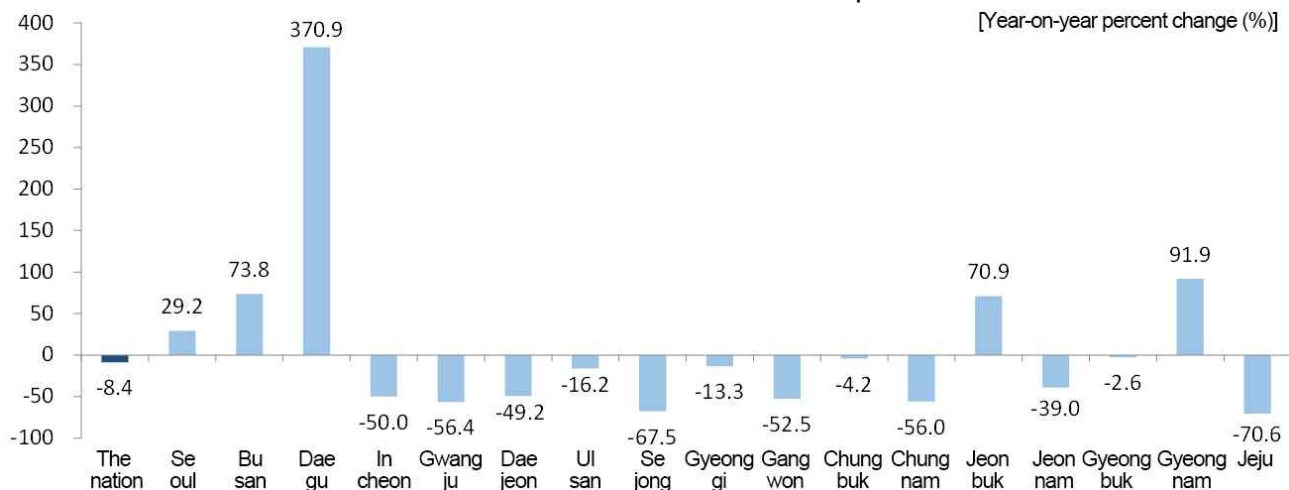
* The Retail Sales Index of the nation includes 'Retail Sales not in Stores'. Whereas, the Retail Sales Index of 17 metropolitan cities and provinces excludes 'Retail Sales not in Stores'.

□ (Construction orders received)

In the second quarter of 2025, the construction orders received of the nation dropped by 8.4% year-on-year due to the decrease in 'Railways and tracks' and 'Machinery installation'.

- Daegu (370.9%), Gyeongnam (91.9%) and Busan (73.8%) recorded a year-on-year rise in construction orders received owing to the increase in 'Dwellings' and 'Ports and airports'. Whereas, Jeju (-70.6%), Sejong (-67.5%) and Gwangju (-56.4%) recorded a year-on-year drop in construction orders received owing to the decrease in 'Offices and shops', 'Dwellings' and 'Roads and bridges'.

< Construction orders received in the second quarter of 2025 >



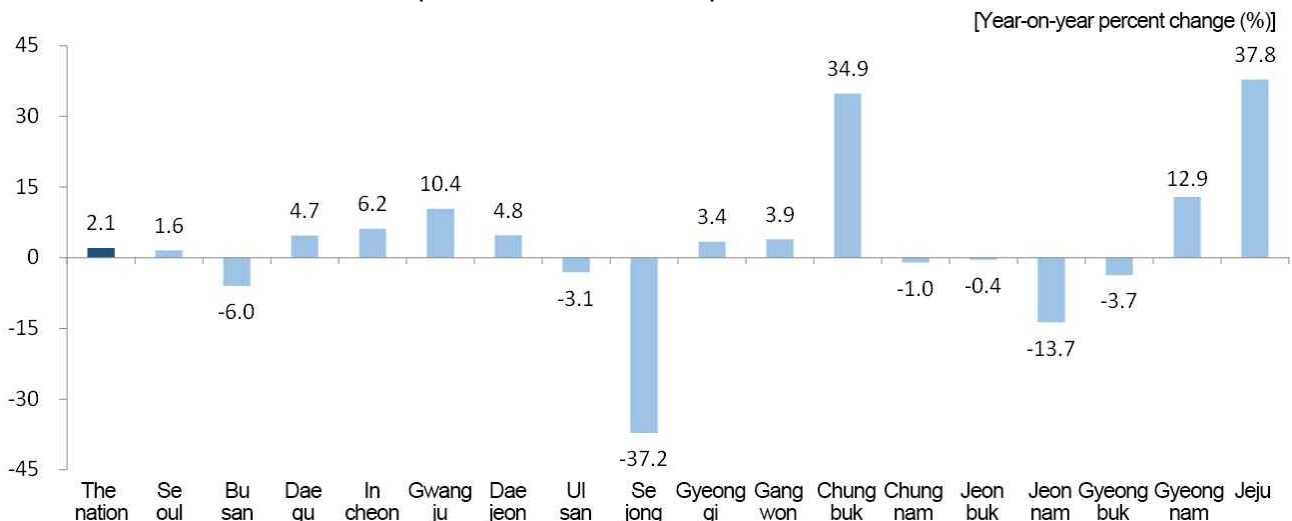
Exports

□ (Exports)

In the second quarter of 2025, the exports of the nation rose by 2.1% year-on-year due to a rise in 'Memory semiconductor', 'Ships' and 'Other heavy and chemical industry products'.

- Sejong (-37.2%), Jeonnam (-13.7%) and Busan (-6.0%) recorded a year-on-year decrease in exports due to a drop in 'Other synthetic plastics and copper products' and 'Ships'. In the meantime, Jeju (37.8%), Chungbuk (34.9%) and Gyeongnam (12.9%) recorded a year-on-year increase in exports owing to a rise in 'Processors and controllers', 'Memory semiconductor' and 'Other heavy and chemical industry products'.

< Exports in the second quarter of 2025 >



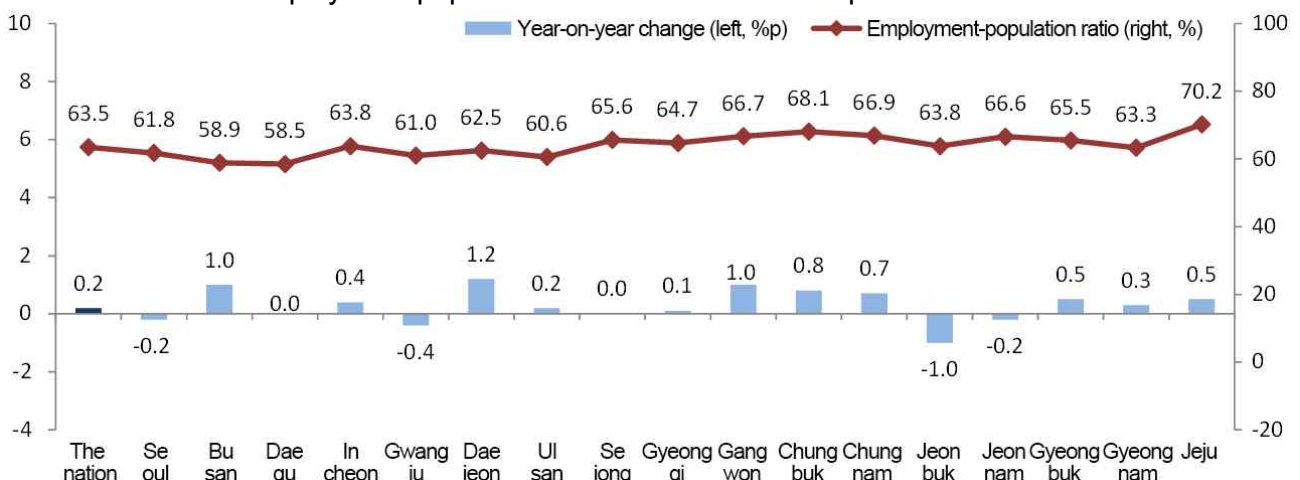
Employment

□ (Employment-population ratio)

In the second quarter of 2025, the employment-population ratio of the nation stood at 63.5%, going up by 0.2%p year-on-year due to the rise in the employment-population ratio of the groups aged '30 ~ 39', '40 ~ 49' and '60 or more'.

- The employment-population ratio showed a year-on-year drop in Jeonbuk (-1.0%p), Gwangju (-0.4%p) and Seoul (-0.2%p). In the meantime, the employment-population ratio showed a year-on-year rise in Daejeon (1.2%p), Busan (1.0%p) and Gangwon (1.0%p).

< Employment-population ratio in the second quarter of 2025 >



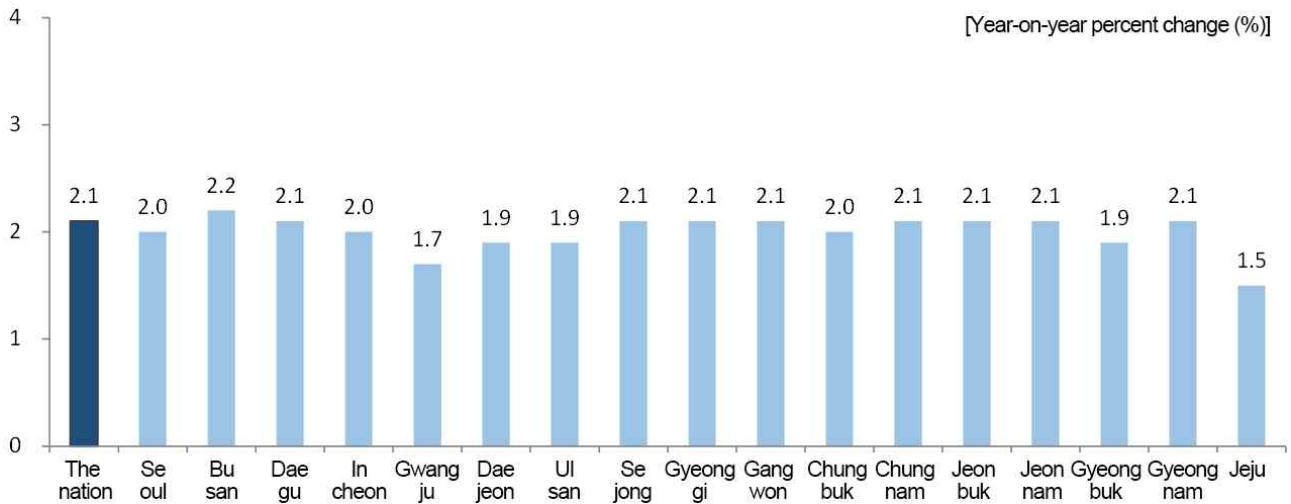
Consumer Price Index

(Consumer Price Index)

In the second quarter of 2025, the Consumer Price Index of the nation went up by 2.1% from the second quarter of 2024 owing to a rise in 'Personal services excluding eating out' and 'Eating out'.

- Jeju (1.5%), Gwangju (1.7%) and Ulsan (1.9%) recorded a lower increase rate compared to the nation. Whereas, Busan (2.2%) recorded a higher increase rate owing to the rise in 'Personal services excluding eating out' compared to the nation.

< Consumer Price Index in the second quarter of 2025 >



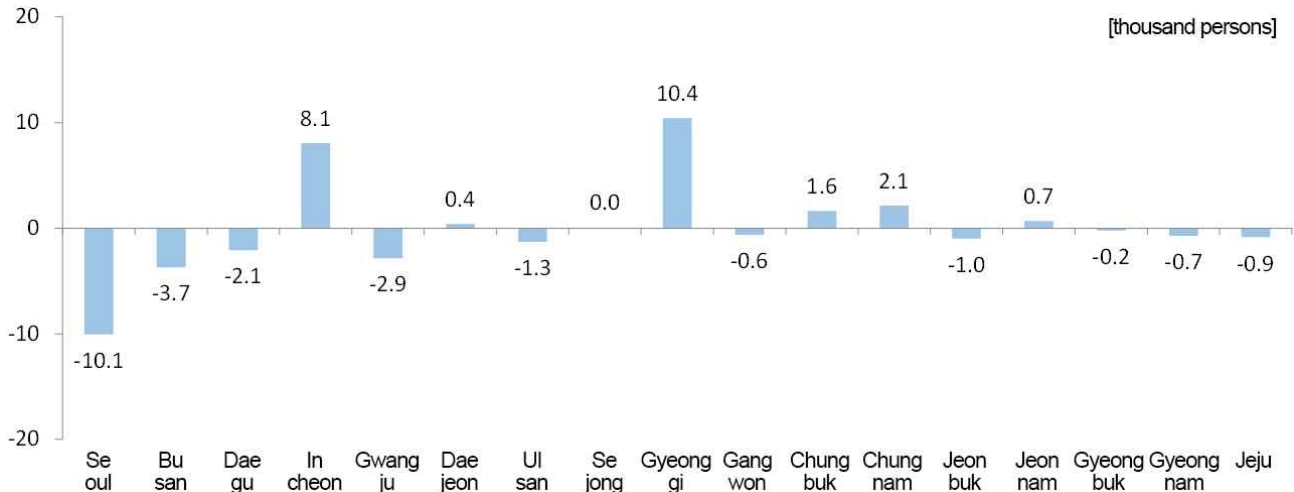
Population

(Internal net migration)

In the second quarter of 2025, 7 regions including Gyeonggi (10,426 persons), Incheon (8,050 persons) and Chungnam (2,132 persons) recorded a plus net migration.

- 10 regions including Seoul (-10,051 persons), Busan (-3,704 persons) and Gwangju (-2,854 persons) recorded a minus net migration.

< Internal net migration by province in the second quarter of 2025 >



< Major Economic Indicators ① >

[Year-on-year, %]

Metropolitan cities and provinces	Production								Consumption <Retail Sales Index ³⁾ >				Construction <Construction orders received>			
	<Mining and Manufacturing Production Index ¹⁾ >				<Index of Services ²⁾ >				3Q 2024	4Q 2024	1Q 2025	2Q 2025 ^p	3Q 2024	4Q 2024	1Q 2025	2Q 2025 ^p
	3Q 2024	4Q 2024	1Q 2025	2Q 2025 ^p	3Q 2024	4Q 2024	1Q 2025	2Q 2025 ^p								
The nation	2.4	3.5	2.0	2.1	0.2	0.6	0.4	1.4	-1.5	-2.0	-0.3	-0.2	26.8	9.7	1.1	-8.4
Seoul	-3.5	-7.0	-5.5	-10.1	0.2	1.3	1.1	2.3	-3.9	-3.9	-3.4	-1.8	75.7	43.8	125.9	29.2
Busan	5.0	4.6	-2.4	-4.0	0.3	0.8	-0.7	2.1	1.1	-1.0	4.6	1.0	3.9	89.1	27.2	73.8
Daegu	1.0	0.0	-5.1	-2.2	-1.4	-1.2	-2.8	-1.2	-2.3	-4.4	-1.8	-1.4	104.2	-5.3	13.8	370.9
Incheon	17.2	9.8	-3.8	-3.7	3.2	2.8	0.9	3.5	-3.8	-5.7	2.8	4.9	177.5	-6.3	-27.5	-50.0
Gwangju	2.5	9.3	10.2	11.3	0.5	-0.4	-1.8	0.2	-1.0	1.4	1.6	2.1	-79.2	-50.9	-84.8	-56.4
Daejeon	11.3	2.5	1.8	-0.6	1.0	0.1	-1.8	0.3	-2.9	-4.3	-2.8	1.2	14.0	-61.2	-63.5	-49.2
Ulsan	2.0	1.4	-0.7	2.5	0.9	0.5	-0.8	-0.5	-2.8	-3.6	3.9	5.4	69.8	64.9	3.8	-16.2
Sejong	2.0	0.7	-7.6	-3.4	-3.0	3.3	4.3	3.3	0.8	3.3	2.3	3.5	589.5	-13.4	362.3	-67.5
Gyeonggi	9.0	13.2	7.3	12.3	0.4	1.5	-0.1	5.4	-3.1	-1.8	0.2	0.3	19.0	19.4	-21.2	-13.3
Gangwon	-9.7	-7.3	-10.9	0.3	-2.3	0.8	-0.5	-1.6	-2.6	-2.0	0.2	-0.9	108.4	16.6	-3.2	-52.5
Chungbuk	-3.7	-4.1	5.8	14.1	-2.2	0.3	-0.5	0.9	2.3	-0.5	0.7	1.4	-8.1	60.7	275.6	-4.2
Chungnam	3.2	-2.1	-0.3	-6.4	-1.7	0.2	-1.3	0.0	3.6	0.5	1.1	-0.5	48.9	80.9	-55.7	-56.0
Jeonbuk	-1.9	0.7	-0.5	-1.3	-2.7	-0.3	-1.5	-1.2	-0.6	-0.7	0.8	0.1	-10.4	-2.7	61.9	70.9
Jeonnam	3.6	6.6	-0.6	-1.7	-0.8	-0.7	-1.5	-0.6	0.7	1.8	0.3	0.4	-59.8	-46.2	-64.0	-39.0
Gyeongbuk	5.1	5.3	2.0	4.1	-1.1	-2.1	-2.8	-1.3	-0.9	-1.9	-0.5	-1.8	-3.8	-65.4	-33.5	-2.6
Gyeongnam	5.4	5.4	-0.7	-1.1	-3.4	-2.2	-3.0	-2.8	1.6	0.4	4.7	1.4	33.8	-44.9	-68.9	91.9
Jeju	3.2	1.2	0.5	-2.2	9.2	1.5	-0.4	-9.2	-2.5	-2.2	-6.6	-2.3	-8.7	-5.3	-49.0	-70.6

1) Including Mining, Manufacturing, Electricity and Gas

2) Including Wholesale and retail trade, Transportation, Accommodation and food service activities, Information and communications, Financial and insurance activities, Real estate activities and renting and leasing, Professional, scientific and technical activities, Business facilities management and business support services, Education, Human health and social work activities, Arts, sports and recreation related services, Membership organizations, repair and other personal services and Sewerage, waste management, materials recovery and remediation activities (volume index)

3) Including 'Department stores', 'Large discount stores', 'Supermarkets and convenience stores', 'Passenger cars and fuel stores' and 'Specialized stores' (volume index)

< Major Economic Indicators ② >

[Year-on-year, %]

Metropolitan cities and provinces	Exports				Employment-population ratio ⁴⁾ (%)				Consumer Price Index				Net migration ⁵⁾ (thousand)			
	3Q 2024	4Q 2024	1Q 2025	2Q 2025 ^p	3Q 2024	4Q 2024	1Q 2025	2Q 2025	3Q 2024	4Q 2024	1Q 2025	2Q 2025	3Q 2024	4Q 2024	1Q 2025	2Q 2025
The nation	10.5	4.2	-2.3	2.1	63.3	62.6	61.8	63.5	2.1	1.6	2.1	2.1	-	-	-	-
Seoul	6.2	6.5	5.2	1.6	61.8	61.6	60.4	61.8	2.1	1.6	2.0	2.0	-13.6	-15.0	6.1	-10.1
Busan	-5.2	4.8	-3.3	-6.0	58.3	57.7	57.4	58.9	2.3	1.7	2.1	2.2	-4.1	-3.4	-3.4	-3.7
Daegu	-20.8	-13.3	-16.7	4.7	58.0	57.6	57.3	58.5	1.9	1.6	2.0	2.1	-0.1	-0.2	-1.2	-2.1
Incheon	10.9	12.2	-1.6	6.2	64.4	63.9	62.9	63.8	2.2	1.6	2.1	2.0	5.5	5.2	11.1	8.1
Gwangju	-21.4	-17.4	-10.8	10.4	60.5	59.2	59.9	61.0	2.2	1.6	2.1	1.7	-1.7	-2.0	-4.9	-2.9
Daejeon	16.3	10.2	8.9	4.8	60.5	60.3	61.0	62.5	2.0	1.7	2.0	1.9	0.1	-0.9	0.9	0.4
Ulsan	0.2	-8.4	-5.9	-3.1	60.2	60.1	59.4	60.6	1.9	1.4	1.9	1.9	-1.3	-0.5	-2.7	-1.3
Sejong	2.7	-15.6	-10.4	-37.2	65.8	66.0	64.0	65.6	2.2	1.9	2.6	2.1	1.2	0.9	0.8	0.0
Gyeonggi	26.6	11.1	2.1	3.4	64.7	64.0	63.2	64.7	2.1	1.7	2.2	2.1	18.1	14.5	5.6	10.4
Gangwon	-8.1	3.9	3.5	3.9	66.2	63.4	60.2	66.7	2.2	1.5	2.3	2.1	-0.3	-0.6	-2.4	-0.6
Chungbuk	-8.7	11.2	9.0	34.9	66.6	65.6	65.2	68.1	1.8	1.4	2.0	2.0	0.6	1.7	1.2	1.6
Chungnam	23.6	13.9	-4.4	-1.0	66.1	65.7	63.0	66.9	1.7	1.3	2.1	2.1	2.3	3.3	1.5	2.1
Jeonbuk	-10.6	-2.9	-4.1	-0.4	64.8	62.9	61.8	63.8	2.1	1.6	2.3	2.1	-1.8	-0.3	-2.0	-1.0
Jeonnam	-2.6	-11.5	-19.3	-13.7	66.6	65.7	64.6	66.6	2.2	1.5	2.2	2.1	-0.7	0.2	-0.2	0.7
Gyeongbuk	6.9	0.7	-3.1	-3.7	64.8	64.0	62.7	65.5	1.9	1.4	2.1	1.9	-2.7	-2.5	-3.5	-0.2
Gyeongnam	27.1	3.5	1.8	12.9	62.1	61.9	62.3	63.3	1.8	1.4	2.0	2.1	-0.7	0.0	-4.7	-0.7
Jeju	-10.2	-15.5	45.3	37.8	69.5	69.0	68.8	70.2	1.5	1.1	1.6	1.5	-0.8	-0.3	-2.2	-0.9

4) Employment-population ratio (%) = (Employed persons ÷ Population aged 15 or more) × 100

5) Net migration (thousand persons) = In-migration - Out-migration (Net migration of the nation = 0)

6) 'p' indicates preliminary data.